



# LED Floodlight Catalog



[www.himel.com](http://www.himel.com)

We are determined to build a world where electricity is *safe and accessible* to one and all



Himel is a global manufacturer and supplier of electric products for Low Voltage Power Distribution, Final Distribution, Power Management, Motor Control and Protection, Industrial Components, and Home Electric offers.

**50+**  
countries served



**110+**  
distributors

**6,700+**  
resellers

**22,700+**  
products

With a footprint in 50+ countries—we are leaders in value-engineered electric products for residential, commercial, industrial, and utilities sectors. We value opportunities for all and provide the best combination of affordable and reliable offers to meet the demand for access to safe electricity.

Low Voltage  
Power Distribution



Final  
Distribution



Power  
Management



Motor  
Control &  
Protection



Industrial  
Components



Home  
Electric



Website



Instagram



Facebook



Youtube



LinkedIn



## LIGHTING

# LED Floodlight B2

Standard: IEC60598



### Benefits

LED Floodlight B2 has outstanding weatherproof performance which is ideal for outdoor lighting application. The Wear-resistant rubber cable is adopted to ensures electrical safety. The deep fin design on the back enhances heat dissipation.

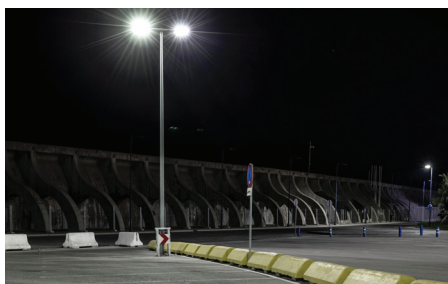
### Features

- ◆ Up to 90lm/w
- ◆ IP65 water and dust proof
- ◆ 4KV surge protection
- ◆ 30,000 hours lifetime
- ◆ Power factor: 0.9

### Selection Code

| Range name              | Power   | CCT                                 |
|-------------------------|---|-------------------------------------|
| HHLFLB2                 | XXX   | XX                                  |
| FLB2:Floodlight Basic 2 | 30: 30W<br>50: 50W<br>100: 100W<br>150: 150W<br>200: 200W | 30: 3000K<br>40: 4000K<br>65: 6500K |

### Applications



| Parking Area



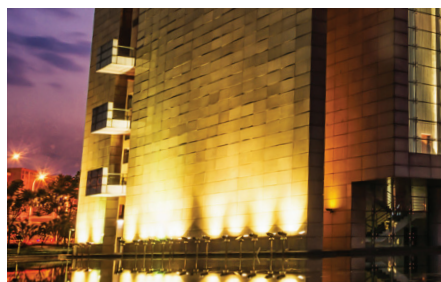
| Billboard



| Squares



| Landscape



| Architecture

## LIGHTING

# LED Floodlight B2

Standard: IEC60598



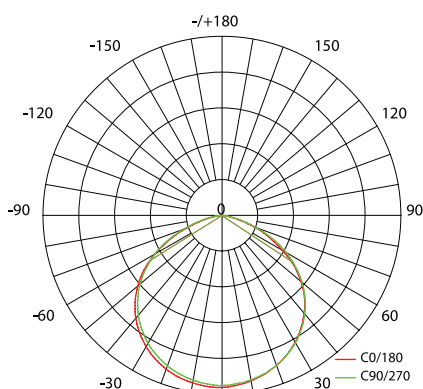
Excellent dissipation design  
Robust & Durable  
Efficiently & Energy saving

## Specification

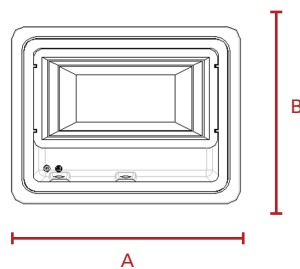
| Comercial Reference | Power (W) | Efficacy (lm/W) | Lumen (lm) | CCT (K) | Average Lifetime |
|---------------------|-----------|-----------------|------------|---------|------------------|
| HHLFLB230W30        | 30        | 90              | 2700       | 3000    | 30Khrs           |
| HHLFLB230W40        | 30        | 90              | 2700       | 4000    | 30Khrs           |
| HHLFLB230W65        | 30        | 90              | 2700       | 6500    | 30Khrs           |
| HHLFLB250W30        | 50        | 90              | 4500       | 3000    | 30Khrs           |
| HHLFLB250W40        | 50        | 90              | 4500       | 4000    | 30Khrs           |
| HHLFLB250W65        | 50        | 90              | 4500       | 6500    | 30Khrs           |
| HHLFLB2100W30       | 100       | 90              | 9000       | 3000    | 30Khrs           |
| HHLFLB2100W40       | 100       | 90              | 9000       | 4000    | 30Khrs           |
| HHLFLB2100W65       | 100       | 90              | 9000       | 6500    | 30Khrs           |
| HHLFLB2150W30       | 150       | 90              | 13500      | 3000    | 30Khrs           |
| HHLFLB2150W40       | 150       | 90              | 13500      | 4000    | 30Khrs           |
| HHLFLB2150W65       | 150       | 90              | 13500      | 6500    | 30Khrs           |
| HHLFLB2200W30       | 200       | 85              | 17000      | 3000    | 30Khrs           |
| HHLFLB2200W40       | 200       | 85              | 17000      | 4000    | 30Khrs           |
| HHLFLB2200W65       | 200       | 85              | 17000      | 6500    | 30Khrs           |

| Technical Specification    |             |
|----------------------------|-------------|
| CRI                        | Ra>=80      |
| Voltage (V)                | AC 220-240  |
| Power factor               | 0.9         |
| Dimmable                   | Non Dim     |
| Housing Colour             | ADC (Black) |
| IP                         | IP65        |
| IK                         | IK06        |
| Driver intergrated(Yes/No) | Yes         |
| Input Frequency            | 50/60Hz     |

## Photometric Data



## Dimensions



| Power | A (mm) | B (mm) |
|-------|--------|--------|
| 30W   | 160    | 120    |
| 50W   | 220    | 170    |
| 100W  | 280    | 230    |
| 150W  | 350    | 280    |
| 200W  | 350    | 280    |

| Mechanical Properties |                |
|-----------------------|----------------|
| Housing Material      | Die-casting    |
| Optical Material      | Tempered glass |

| Application Condition |          |
|-----------------------|----------|
| Operating Temperature | -40~45°C |
| Storage Temperature   | -40~65°C |