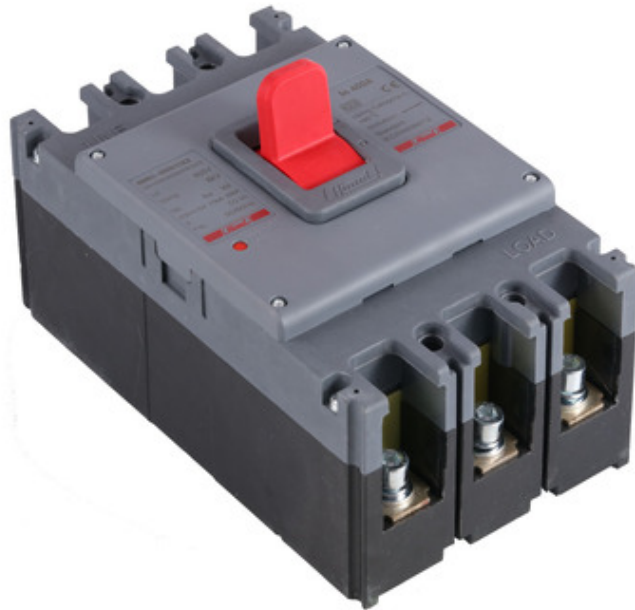


Product data sheet

HDM3160F16033XX

Characteristics

Molded case circuit breaker HDM3 - 160F/3P - Mag-theR 160A



Main

Range of product	HDM3
Product or component type	Enclosed moulded case circuit breaker
Suitability for isolation	Yes
Trip unit technology	Thermal-magnetic
Device application	Power distribution protection
Voltage release type	Shunt trip release Undervoltage release
Provided equipment	alarm motor mechanism handle terminal extension interphase barriers MN or MX voltage release

Complementary

Poles description	3P
[In] rated current	160.0 A
Frame size	160AF
[Ue] rated operational voltage	400/415 V
Network type	AC
Network frequency	50...60 Hz
Electrical durability	4000.0 cycles
Mechanical durability	20000.0 cycles with maintenance 10000.0 cycles without maintenance
[Uimp] rated impulse withstand voltage	8.0 kV
[Ics] rated service breaking capacity	30 kA
Rated breaking capacity	50 kA
[Ui] rated insulation voltage	800.0 V
Mounting mode	Fixed front
Clamping connection capacity	70 mm ²
Tightening torque	9.5...10.5 N.m
Utilisation category	Category A
Provision for padlocking	Handle padlockable in on and off position
Height	165.0 mm
Width	107.0 mm
Depth	88.0 mm
Product weight	1.53 kg

Environment

IP degree of protection	IP20
Pollution degree	3
Ambient air temperature for operation	40.0 °C
Ambient air temperature for storage	-20...70 °C
Dielectric test voltage	3 kV
Operating altitude	0...2000 m
Standards	IEC 60947-2
Product certifications	CE KEMA

Packing Units

Unit Type of Package 1	PCE
Number of Units in Package 1	1
Package 1 Height	16.5 cm
Package 1 Width	10.7 cm
Package 1 Length	8.8 cm
Package 1 Weight	1.53 kg

Offer Sustainability

Sustainable packaging	No
-----------------------	----
